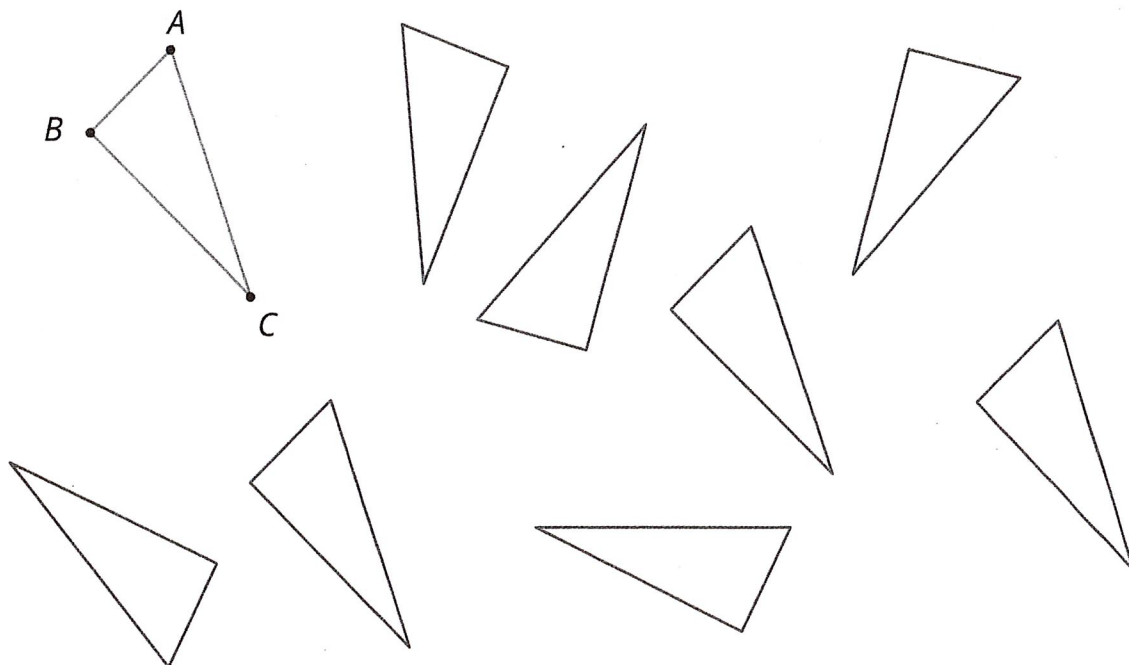


Lesson 12: Congruent Polygons

Let's decide if two figures are congruent.

12.1: Translated Images

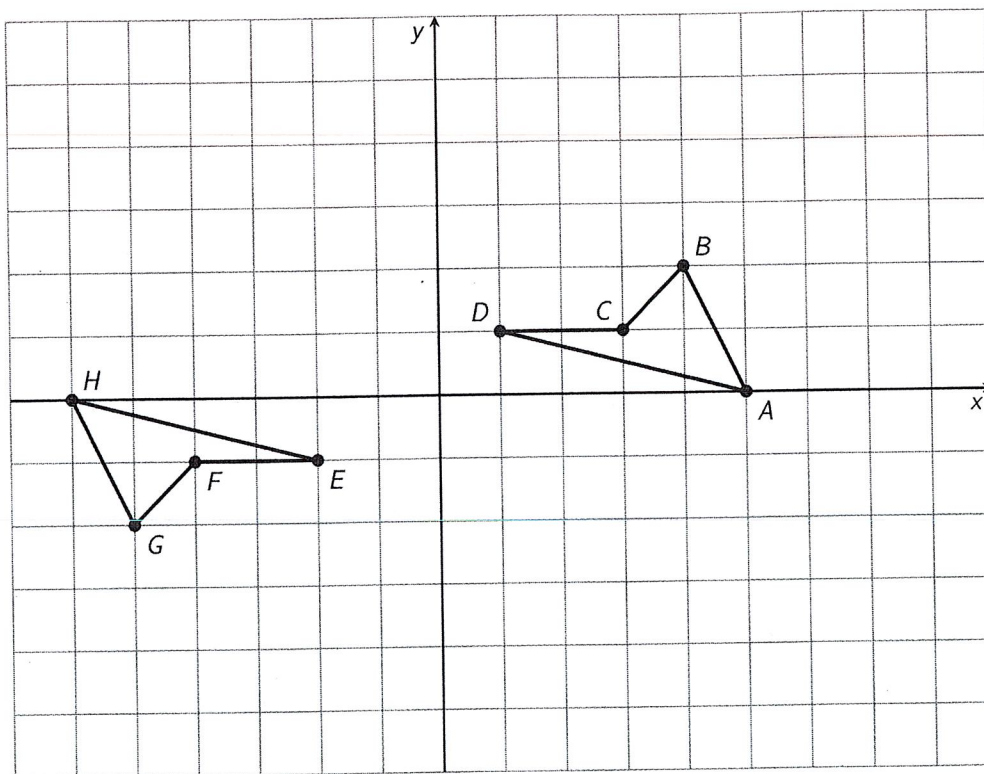
All of these triangles are congruent. Sometimes we can take one figure to another with a translation. Shade the triangles that are images of triangle ABC under a translation.



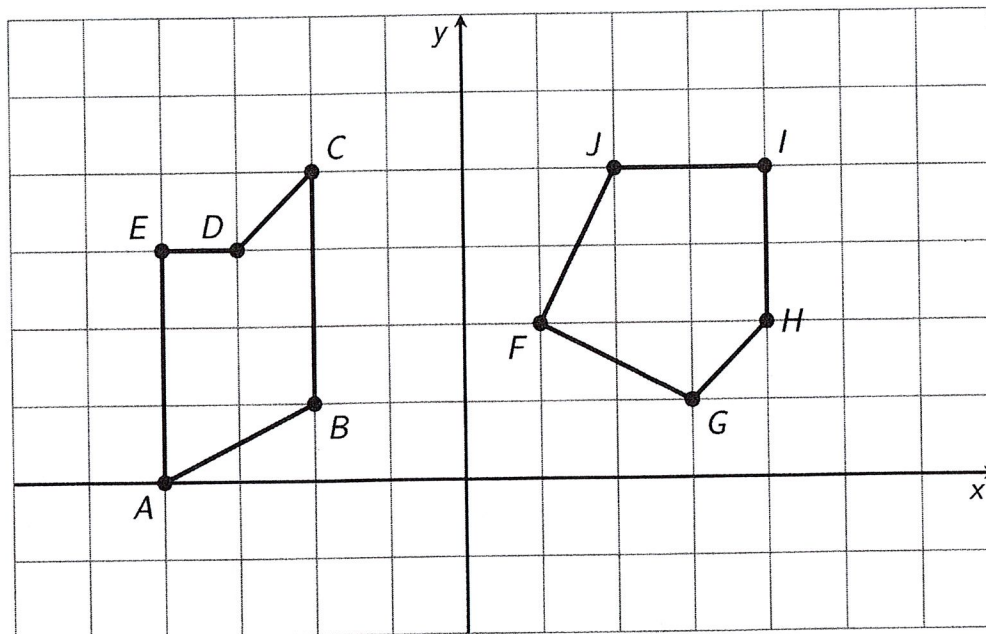
12.2: Congruent Pairs (Part 1)

For each of the following pairs of shapes, decide whether or not they are congruent. Explain your reasoning.

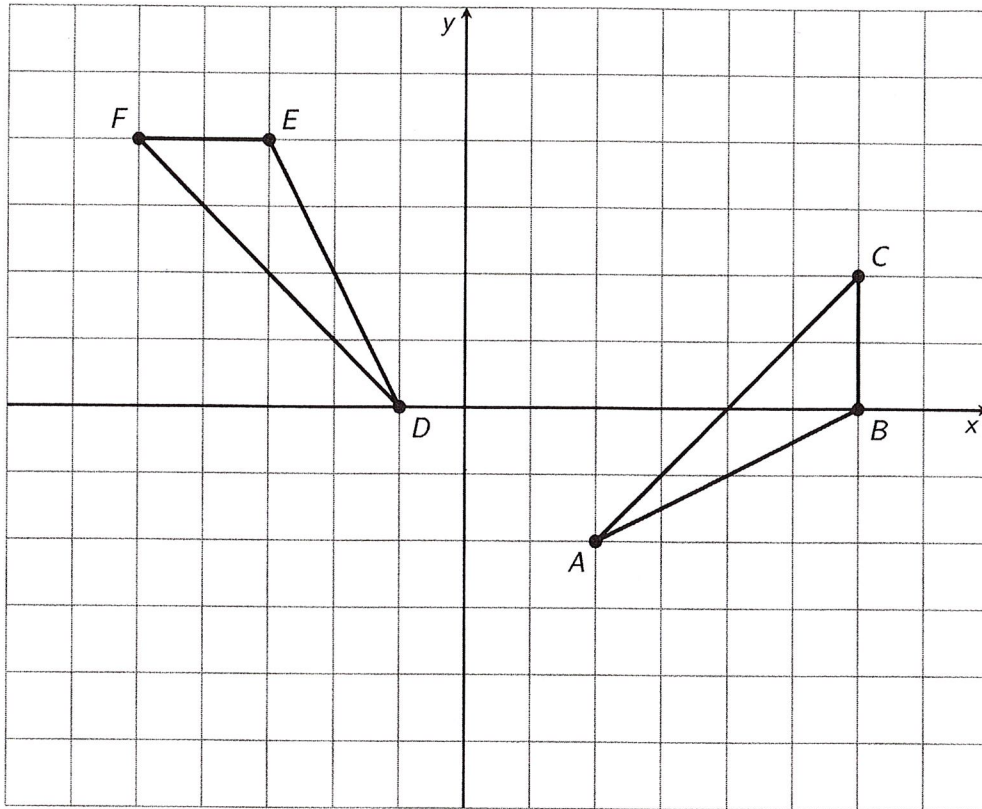
1.



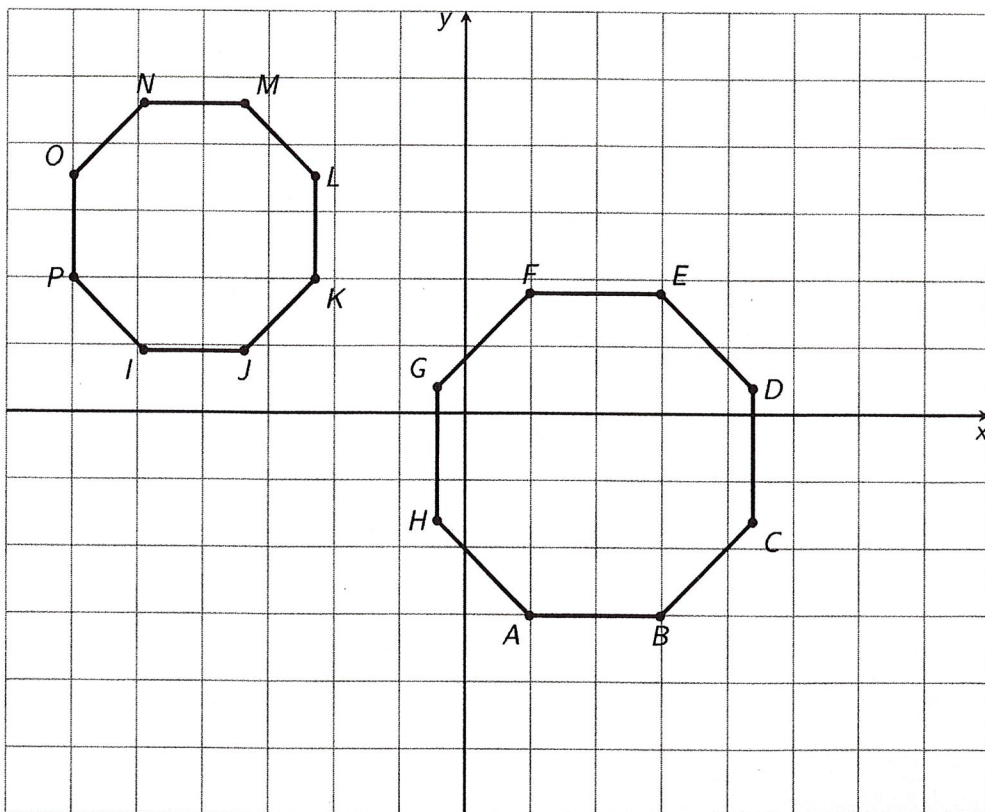
2.



3.



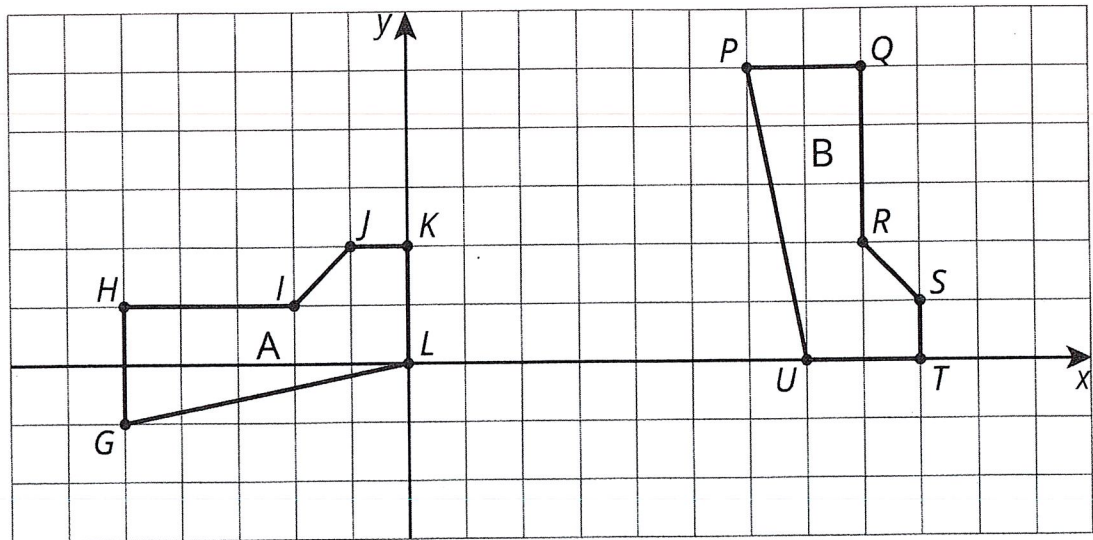
4.



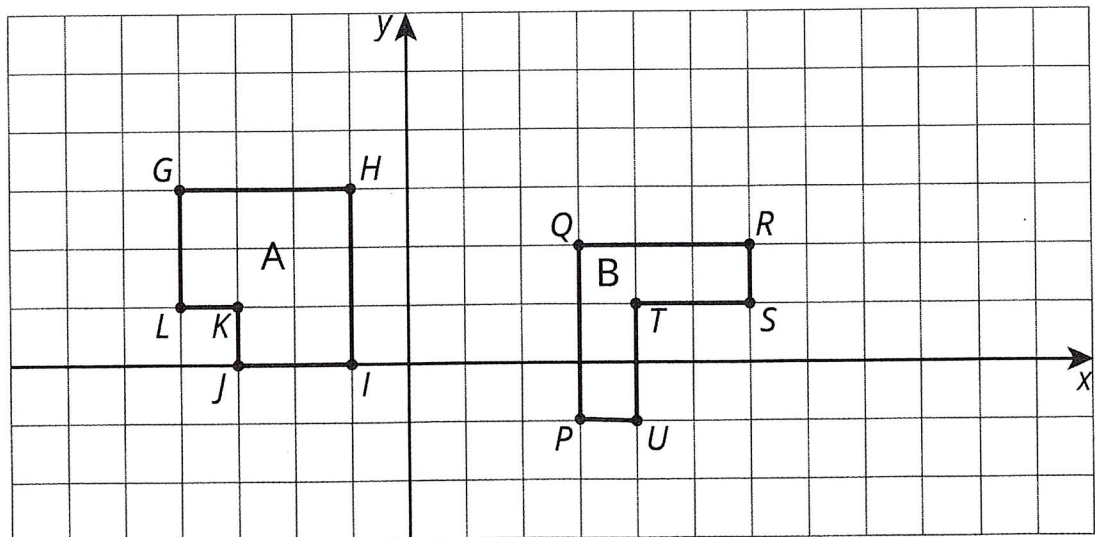
12.3: Congruent Pairs (Part 2)

For each pair of shapes, decide whether or not Shape A is congruent to Shape B . Explain how you know.

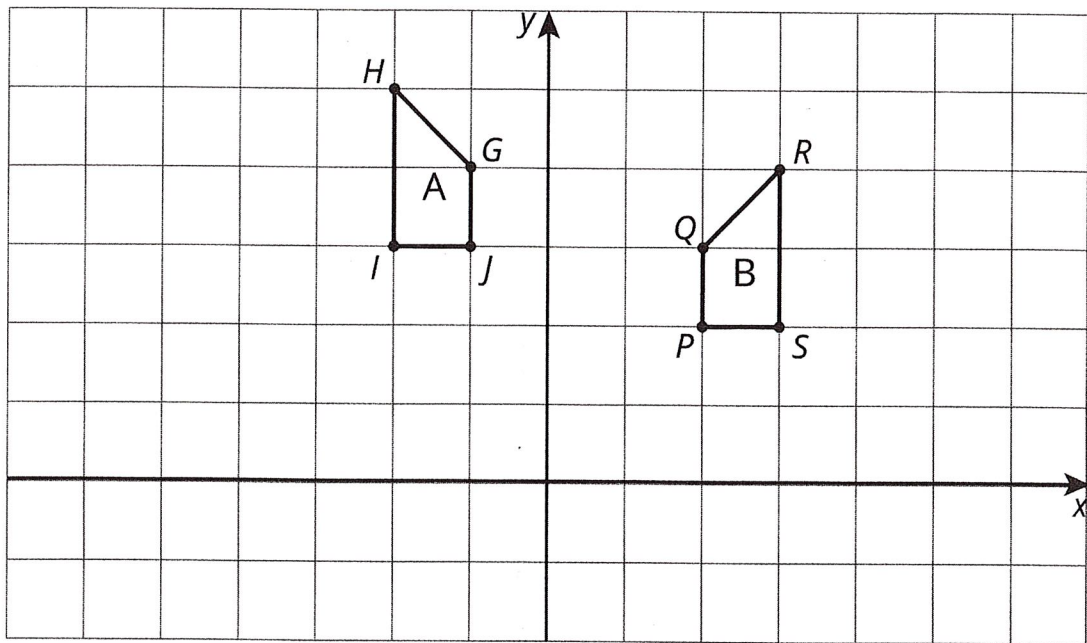
1.



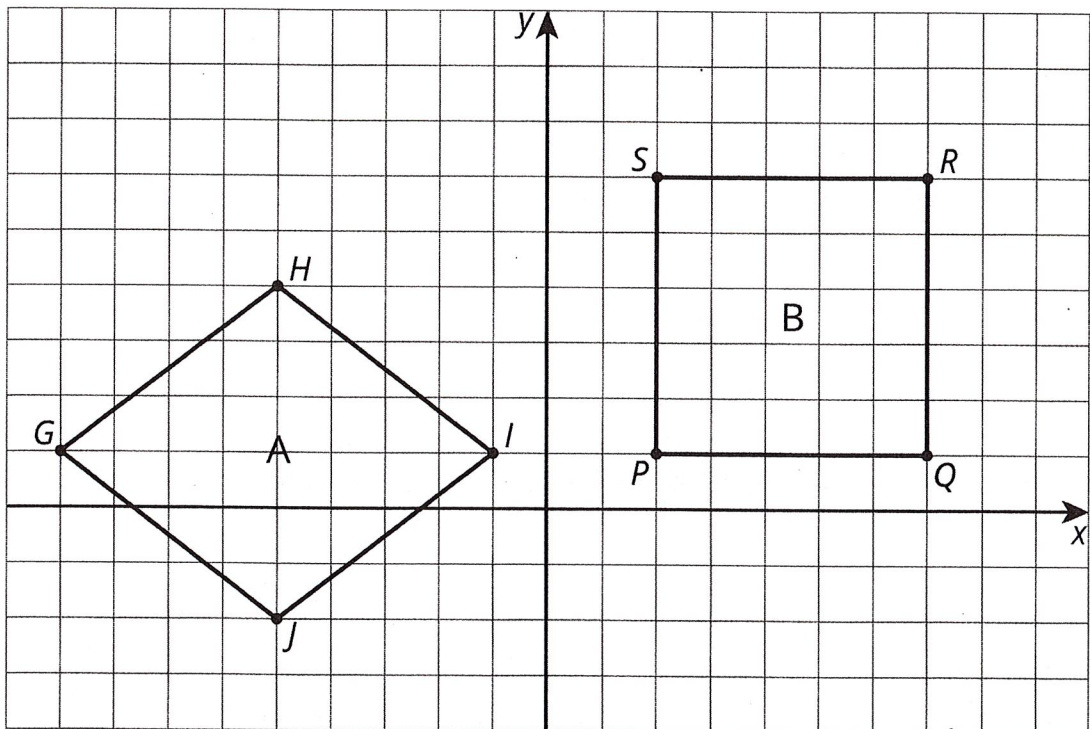
2.



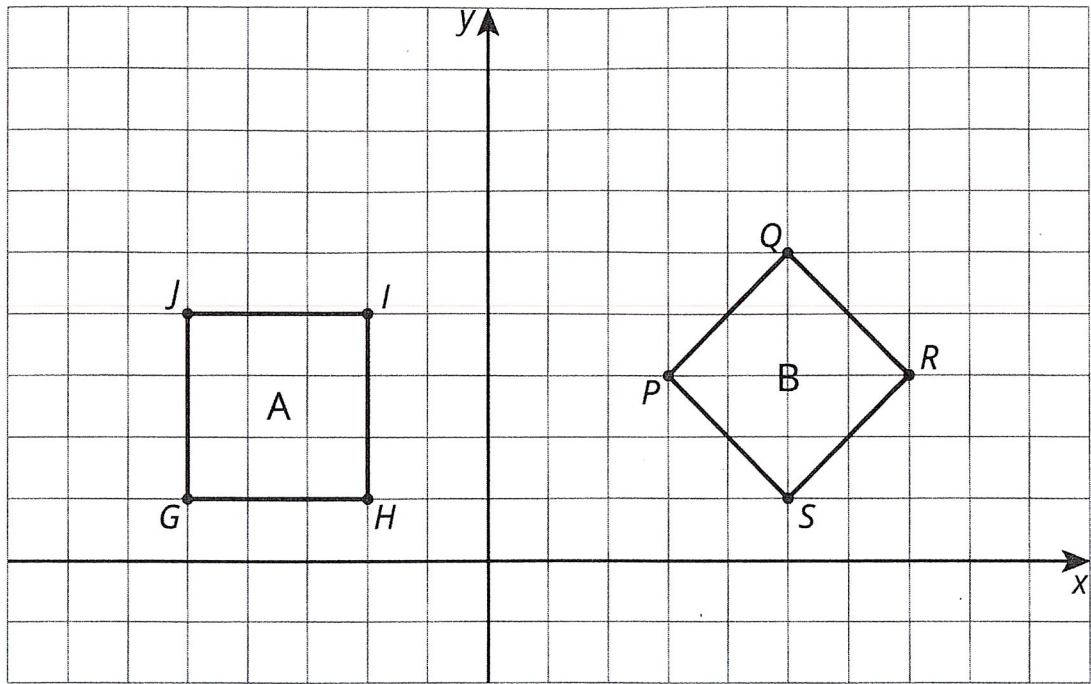
3.



4.



5.



Are you ready for more?

A polygon has 8 sides: five of length 1, two of length 2, and one of length 3. All sides lie on grid lines. (It may be helpful to use graph paper when working on this problem.)

1. Find a polygon with these properties.

2. Is there a second polygon, not congruent to your first, with these properties?