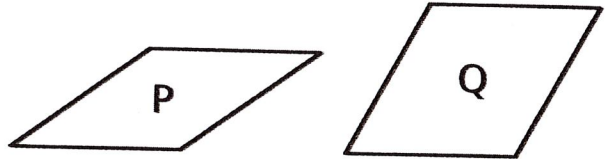
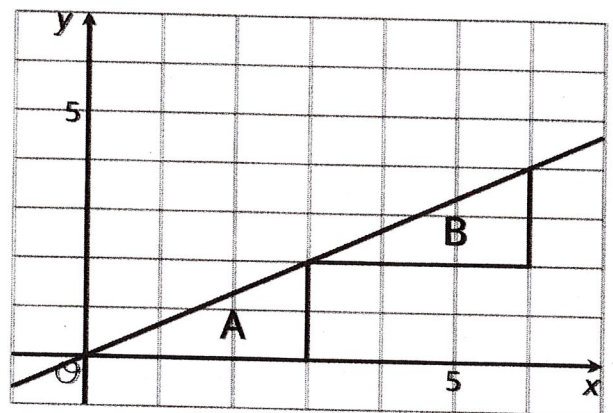


**Lesson 7 Practice Problems**

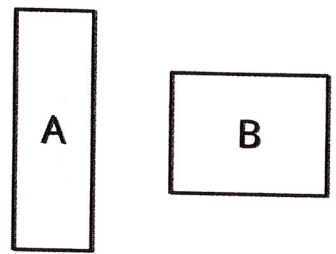
1. Is there a rigid transformation taking Rhombus P to Rhombus Q? Explain how you know.



2. Describe a rigid transformation that takes Triangle A to Triangle B.



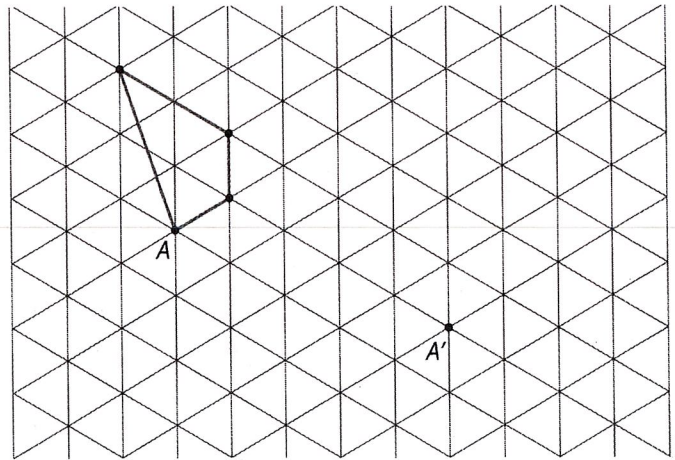
3. Is there a rigid transformation taking Rectangle A to Rectangle B? Explain how you know.



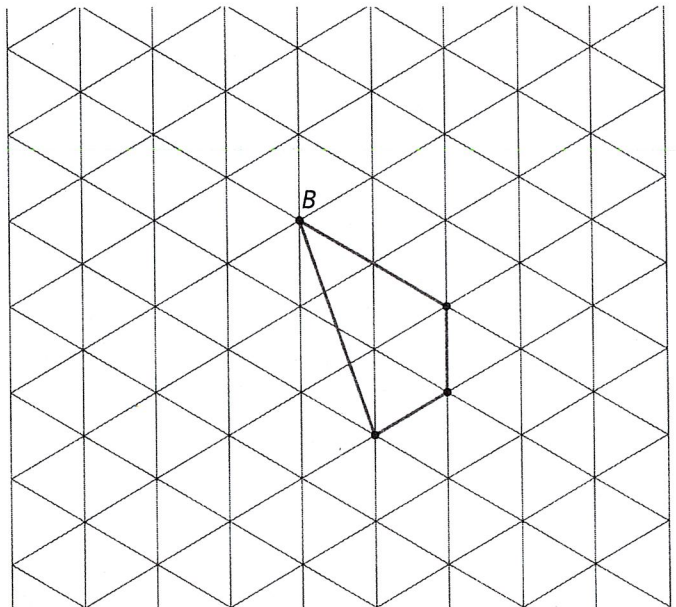


4. For each shape, draw its image after performing the transformation. If you get stuck, consider using tracing paper.

a. Translate the shape so that  $A$  goes to  $A'$ .



b. Rotate the shape 180 degrees counterclockwise around  $B$ .



c. Reflect the shape over the line shown.

