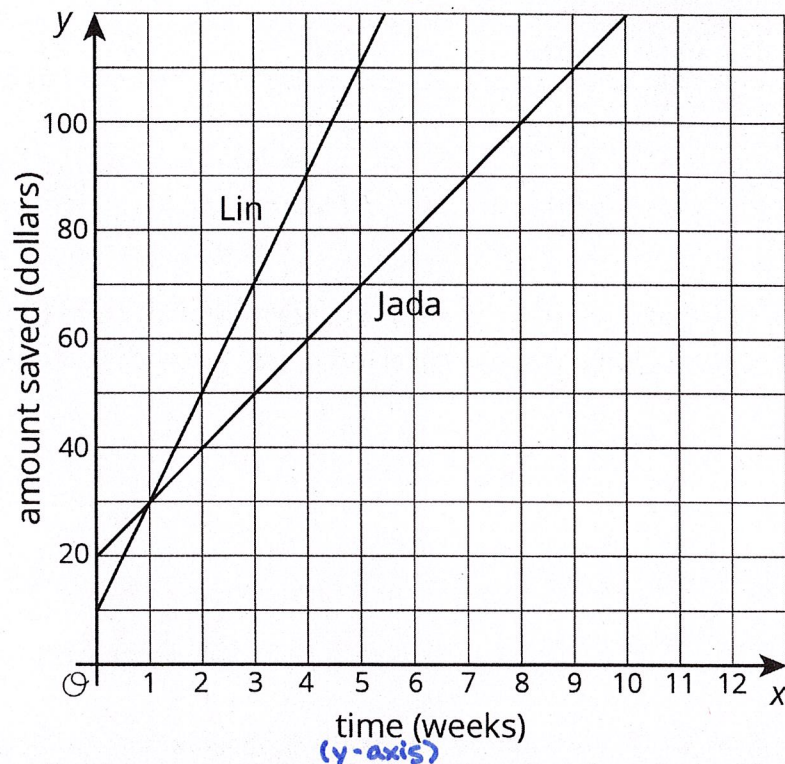


Unit 3

Lesson 6 Summary

At the start of summer break, Jada and Lin decide to save some of the money they earn helping out their neighbors to use during the school year. Jada starts by putting \$20 into a savings jar in her room and plans to save \$10 a week. Lin starts by putting \$10 into a savings jar in her room plans to save \$20 a week. Here are graphs of how much money they will save after 10 weeks if they each follow their plans:



The value where a line intersects the vertical axis is called the **vertical intercept**. When the vertical axis is labeled with a variable like y , this value is also often called the **y -intercept**. Jada's graph has a vertical intercept of \$20 while Lin's graph has a vertical intercept of \$10. These values reflect the amount of money they each started with. At 1 week they will have saved the same amount, \$30. But after week 1, Lin is saving more money per week (so she has a larger rate of change), so she will end up saving more money over the summer if they each follow their plans.

Lesson 6 Glossary Terms

- vertical intercept

* Slope tells you how steep a line is

* A line represents a proportional relationship when the y -intercept is zero.