

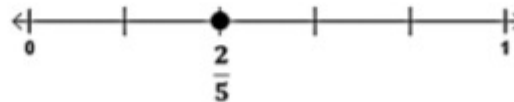
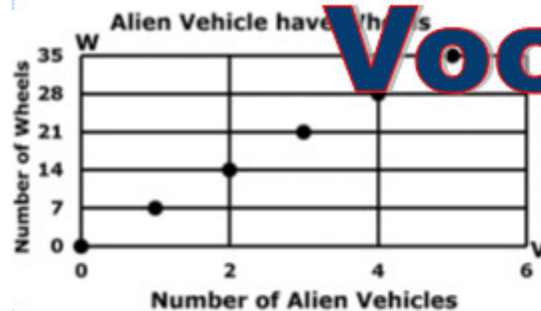
8th Grade Open Up

Intervention
Practice
Challenge

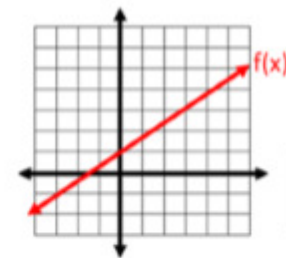


Resources Unit 3

Vocabulary



$$\text{Rate of Change} = 2 \div 3 = 0.\overline{6}$$

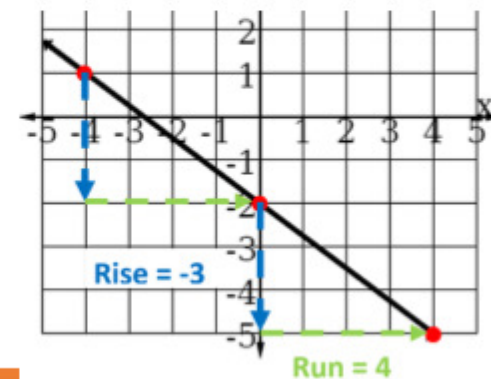
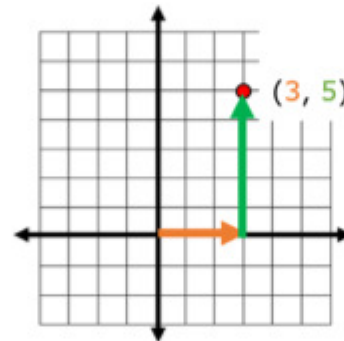


x	-3	0	3	6
y	-1	1	3	5

run = 3

rise = 2

Smarter Balanced



8th Grade Open Up Resources Unit 3 Vocabulary

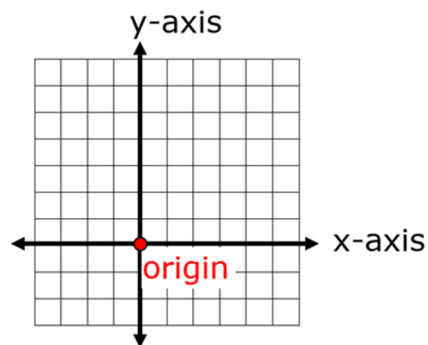
Standards for this unit: 8.EE.B.5, 8.EE.B.6, 8.F.A.1, 8.F.B.4

axes	initial value	rate of change	x-axis
constant of proportionality	intersect	scale	y-axis
decrease	linear	slope	y-intercept
distance	linear equation	slope triangle	
equation	linear relationship	solution	
graph	ordered pair	table	
graph scale	origin	unit rate	
horizontal axis	pace	vertical axis	
increase	proportional relationship	vertical intercept	

When I created this resource for the teachers, I looked at the vocabulary in the Unit. Then I looked at the task models and Item Specifications for Smarter Balanced.

axes

8th-3



The horizontal x-axis and the vertical y-axis.

constant of proportionality

8th-3

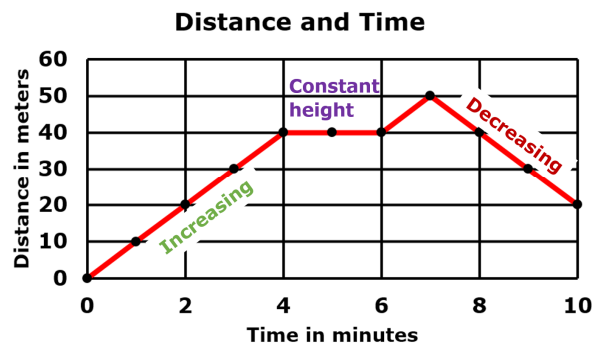
Bags	Jelly Beans
1	15
2	30
3	45
7	105

$$k = \frac{15}{1} = \frac{30}{2} = \frac{45}{3} = \frac{105}{7}$$

Usually represented by the variable k , and used in the equation $y = kx$.

decrease

8th-3



Negative slope.

distance

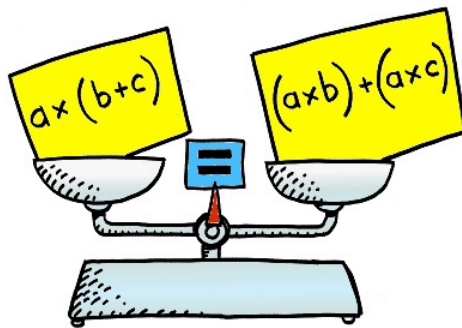
8th-3



The length
between two
points.

equation

8th-3

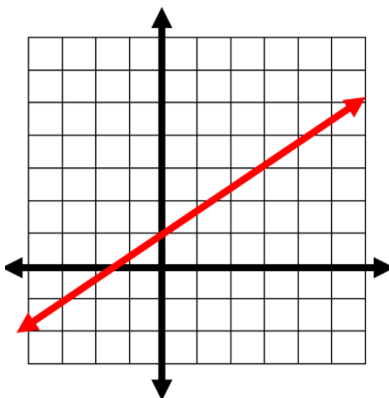


$a(b + c)$ equals $(a \times b) + (a \times c)$

A mathematical sentence
with an equal sign. The
amount on one side of the
equal sign has the same
value as the amount on
the other side.

graph

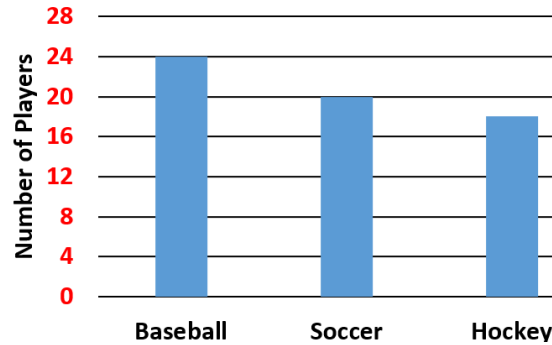
8th-3



A display of data.

graph scale

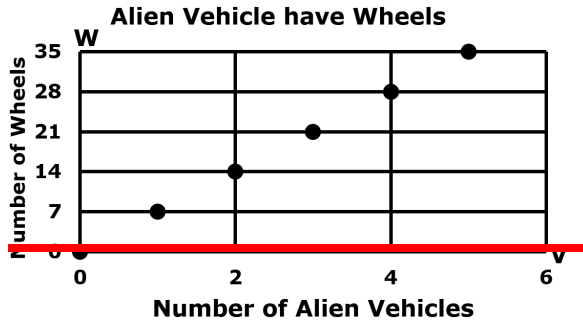
8th-3



Describes
the **count**
by used.

horizontal axis

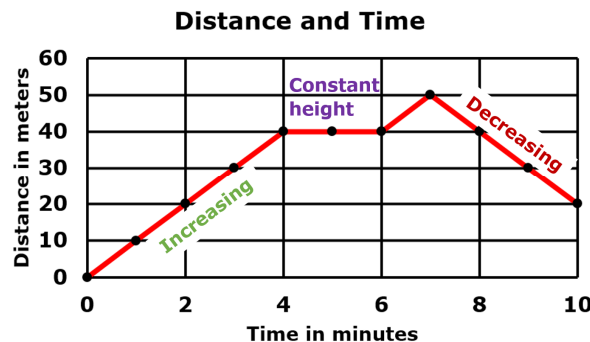
8th-3



The **axis** that goes
across left to right
and is parallel with
the horizon.

increase

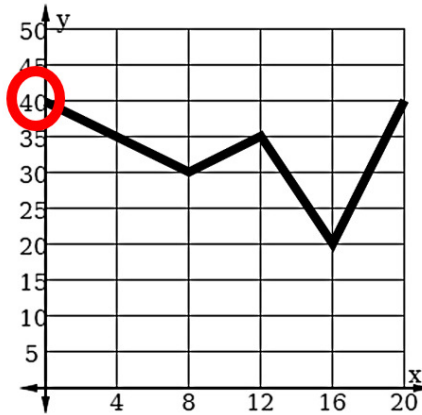
8th-3



Positive
slope.

initial value

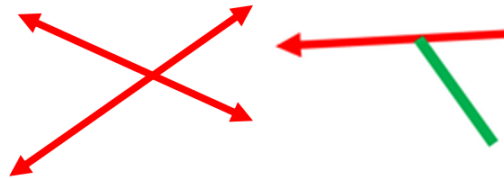
8th-3



The starting value
for y .
The value of y when
 $x = 0$.
The y -intercept.

intersect

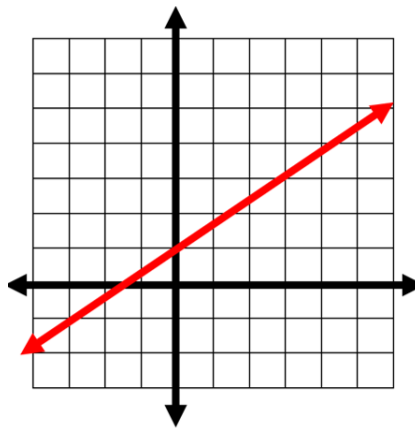
8th-3



To cross or
meet.

linear

8th-3



A line when
graphed.

linear
equation

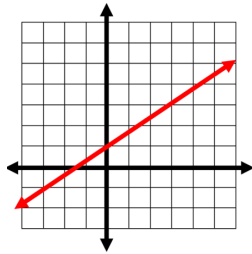
8th-3

$$y = \frac{2}{3}x + 1$$

A line when
graphed.

linear
relationship

8th-3

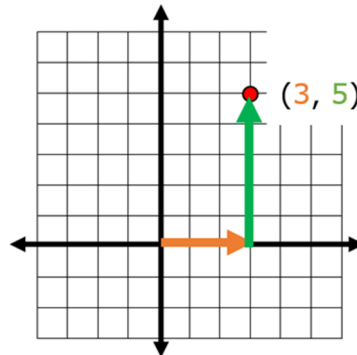


$$y = \frac{2}{3}x + 1$$

A line when
graphed.

ordered
pair

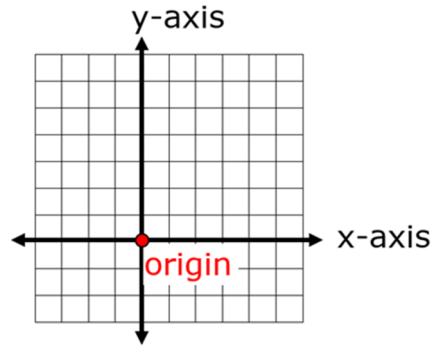
8th-3



Describes the location
of a single point on a
grid.

origin

8th-3



The center of the grid. Where the x-axis intersects the y-axis. The origin is at (0,0).

pace

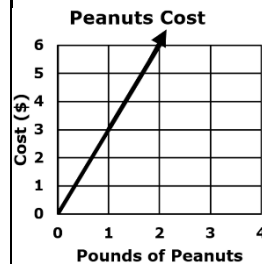
8th-3



A rate of movement.

proportional relationship

8th-3



Pounds	\$
1	3
2	6
3	9
4	12

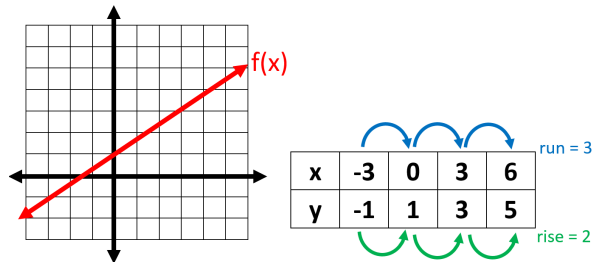
$$k = \frac{3}{1} = \frac{6}{2} = \frac{9}{3} = \frac{12}{4}$$

When there is a constant k , such that $y = kx$.

rate of change

8th-3

$$\text{Rate of Change} = 2 \div 3 = 0.\overline{6}$$

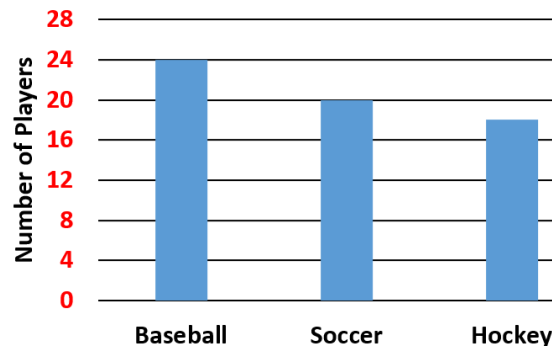


The quotient of the change in output and the change in input.

OR
slope

scale

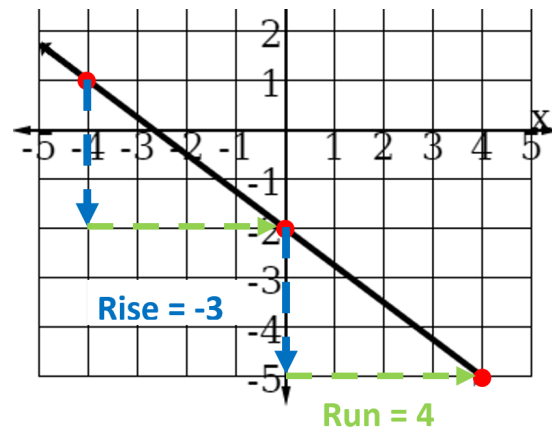
8th-3



Describes the count by used on an **axis**.

slope

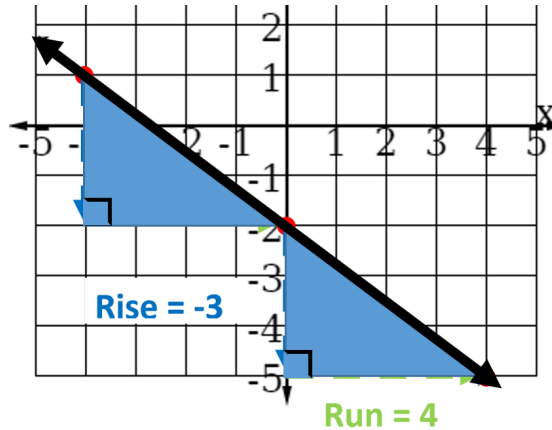
8th-3



The slope of a non-vertical line is the ratio of the rise to the run and describes the tilt and steepness.

slope triangle

8th-3



Right triangles
used to find the
slope of the line.

solution

8th-3

Select **all** equations that
have $x = 4$ as a solution.

A. $x + 7 = 10$

B. $3 + x = 7$

C. $x \cdot 3 = 12$

D. $4 \cdot x = 12$

The value of a
variable that
makes the
equation true.

table

8th-3

Cereal	Elemental iron
Coco Puffs	3
Total	5
Corn Pops	1
Cheerios	4
Fruit Loops	2

A data
display.

unit rate

8th-3

Parkway bought 700 pencils.



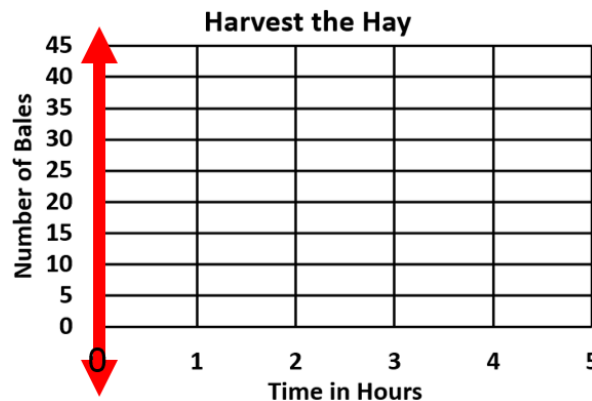
There are 350 students.
What is the unit rate?
2 pencils per 1 student.

A comparison of two measurements in which the second term has a value of 1.

A rate with a denominator of 1.

vertical axis

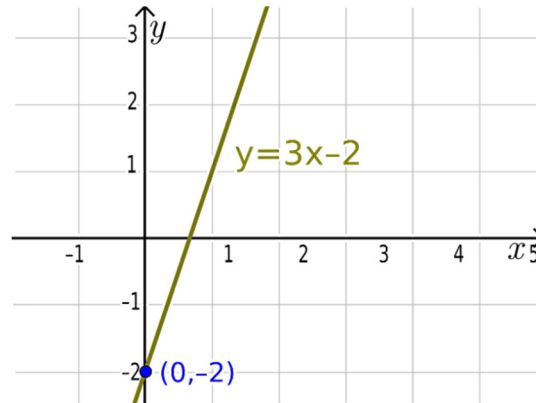
8th-3



The axis that goes up and down.

vertical intercept

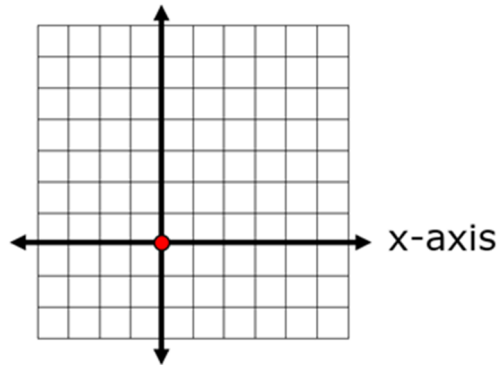
8th-3



The point where the line intersects the vertical axis.

x-axis

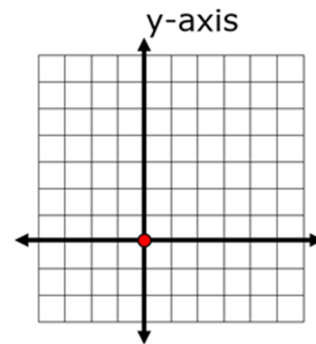
8th-3



The horizontal line on the grid passing through the center called the origin.

y-axis

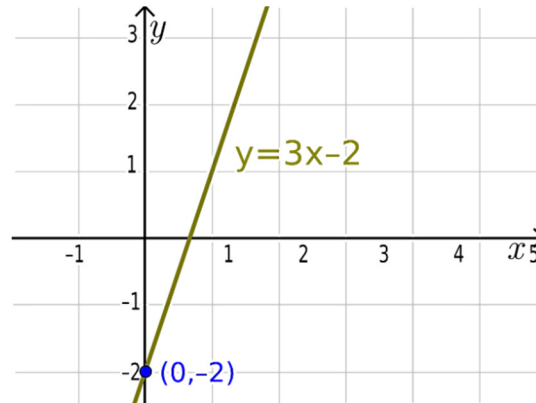
8th-3



The vertical line on the grid passing through the center called the origin.

y-intercept

8th-3



The point where the line intersects the y-axis.